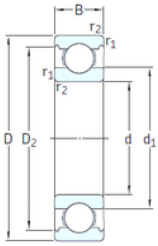




## Bearing import and Export Co., Ltd



VA201



2Z/VA201



2Z/VA208



2Z/VA228

12 mm x 32 mm x 10 mm SKF 6201/VA201  
deep groove ball bearings

Bearing No. 6201/VA201

6201/VA201 Bearing 2D drawings and 3D CAD models

Size	12x32x10 mm
Bore Diameter	12 mm
Outer Diameter	32 mm
Width	10 mm
d	12 mm
D	32 mm
B	10 mm
C	10 mm
d1	18,4 mm
r1 min.	0,6 mm
r2 min.	0,6 mm
D2	27,4 mm
Weight	0,037 Kg
Temperature -	30 to +250 °
Basic static load rating (C0)	3,1 kN
Category	Single Row Ball Bearings
Inventory	0.0
Manufacturer Name	SKF
Minimum Buy Quantity	N/A
Weight / Kilogram	0.04
EAN	7316577745064
Product Group	B00308
Enclosure	Open
Precision Class	ABEC 1   ISO P0
Maximum Capacity / Filling Slot	No



## Bearing import and Export Co., Ltd

Rolling Element	Ball Bearing
Snap Ring	No
Internal Special Features	Polyalkylene Glycol/Graphite Mixture Filled
Cage Material	Steel
Internal Clearance	C0-Medium
Inch - Metric	Metric
Long Description	12MM Bore; 32MM Outside Diameter; 10MM Outer Race Width; Open; Ball Bearing; ABEC 1   ISO P0; No Filling Slot; No Snap Ring; Polyalkylene Glycol/Graphite Mixture Filled Internal Special Features; C0-M
Other Features	Deep Groove   Extreme Temperature Variant
Category	Single Row Ball Bearing
UNSPSC	31171504
Harmonized Tariff Code	8482.10.50.68
Noun	Bearing
Keyword String	Ball
Manufacturer URL	<a href="http://www.skf.com">http://www.skf.com</a>
Manufacturer Item Number	6201/VA201
Weight / LBS	0.037
Inner Race Width	0 Inch   0 Millimeter
Outside Diameter	1.26 Inch   32 Millimeter
Outer Race Width	0.394 Inch   10 Millimeter
Bore	0.472 Inch   12 Millimeter
bore diameter:	12 mm
static load capacity:	3.1 kN
outside diameter:	32 mm
precision rating:	Not Rated
overall width:	10 mm



## Bearing import and Export Co., Ltd

finish/coating:	Uncoated
bore type:	Round
cage material:	Steel
closure type:	Open
outer ring width:	10 mm
row type & fill slot:	Single Row Non-Fill Slot
fillet radius:	0.6 mm
snap ring included:	Without Snap Ring
maximum rpm:	400 RPM
internal clearance:	C0
series:	62
operating temperature range:	-20 to +480 ° F
resistance features:	Corrosion Resistant, Extreme Temperature
$d_1$	18.45 mm
$D_2$	27.34 mm
$r_{1,2}$ min.	0.6 mm
$d_a$ min.	16.2 mm
$D_a$ max.	27.8 mm
$r_a$ max.	0.6 mm
Basic dynamic load rating C	7.28 kN
Basic static load rating $C_0$	3.1 kN
Limiting speed	400 r/min
Limiting temperature T max.	250 ° C
Mass bearing	0.037 kg