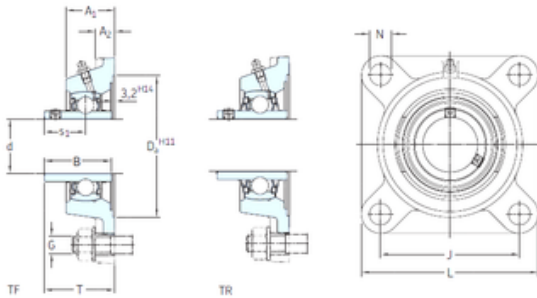




Bearing import and Export Co., Ltd

SKF FY 50 WF bearing units

Bearing No. FY 50 WF



FY 50 WF Bearing 2D drawings and 3D CAD models

Bore Diameter	50 mm
d	50 mm
Da	125,4 mm
s1	38,1 mm
A1	43 mm
B1	62,7 mm
G	16 mm
J	111 mm
L	143 mm
N	18 mm
T	66,1 mm
A2	15 mm
Weight	2,7 Kg
Basic dynamic load rating (C)	35,1 kN
Basic static load rating (C0)	23,2 kN
Fatigue load limit (Pu)	0,98
Category	Bearings
Inventory	0.0
Manufacturer Name	SKF
Minimum Buy Quantity	N/A
UNSPSC	31171501
Weight / Kilogram	0
EAN	7316570381184
Product Group	M06110
Housing material	Cast iron
D _a	125.4 mm



Bearing import and Export Co., Ltd

D_{b1}	107 mm
D_{b2}	118 mm
A	43 mm
A_1	15 mm
A_3	3.2 mm
A_5	29.5 mm
B_1	62.7 mm
s_1	38.1 mm
R_G	1/4-28 UNF
R_1	28.5 mm
D_N	6.5 mm
SW_N	7 mm
G_N	1/4-28 SAE-LT
J_6	129 mm
J_7	35.5 mm
N_4	4 mm
Basic dynamic load rating C	35.1 kN
Basic static load rating C_0	23.2 kN
Fatigue load limit P_u	0.98 kN
Limiting speed	4000 r/min
Mass bearing unit	2.4 kg
Thread grub screw G_2	M10x1
Hexagonal key size for grub screw N	5 mm
Recommended tightening torque for grub screw	16.5 N · m
Recommended diameter for attachment bolts, mm G	16 mm
Recommended diameter for attachment bolts, inch G	0.625 in